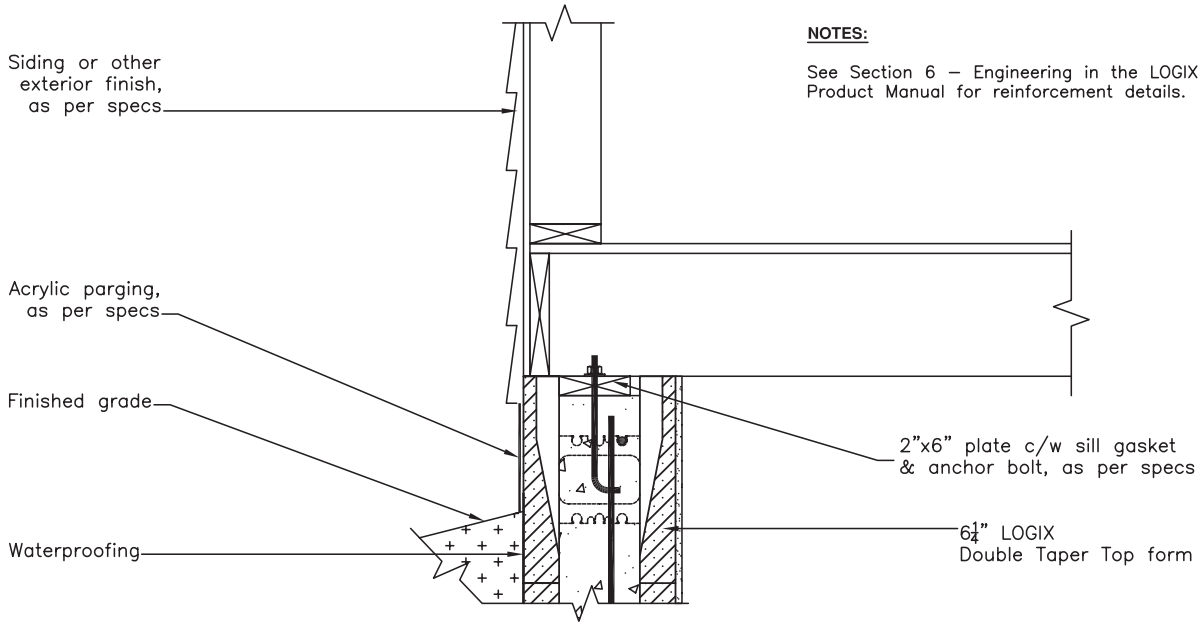


5.7 – FLOOR CONNECTIONS

5.7.1 – 2x6 TOP PLATE RECESSED WITH DOUBLE TAPER TOP

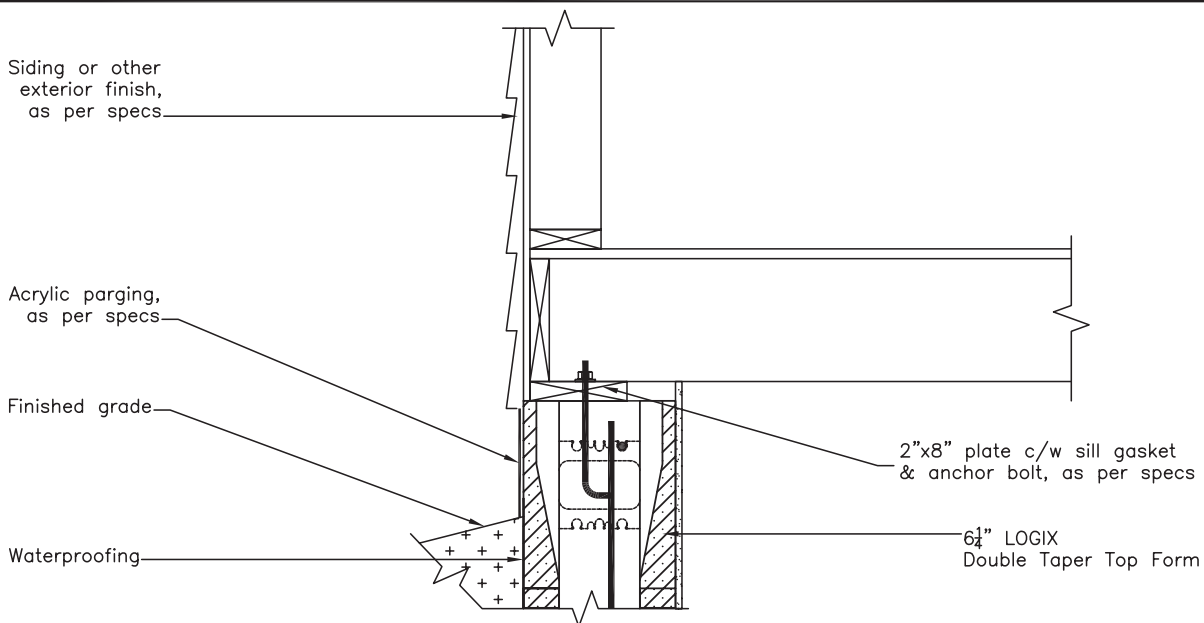
5.7.2 – 2x8 TOP PLATE OVERHUNG WITH DOUBLE TAPER TOP

CAD DRAWINGS



NOTES:
See Section 6 – Engineering in the LOGIX Product Manual for reinforcement details.

2x6 TOP PLATE RECESSED



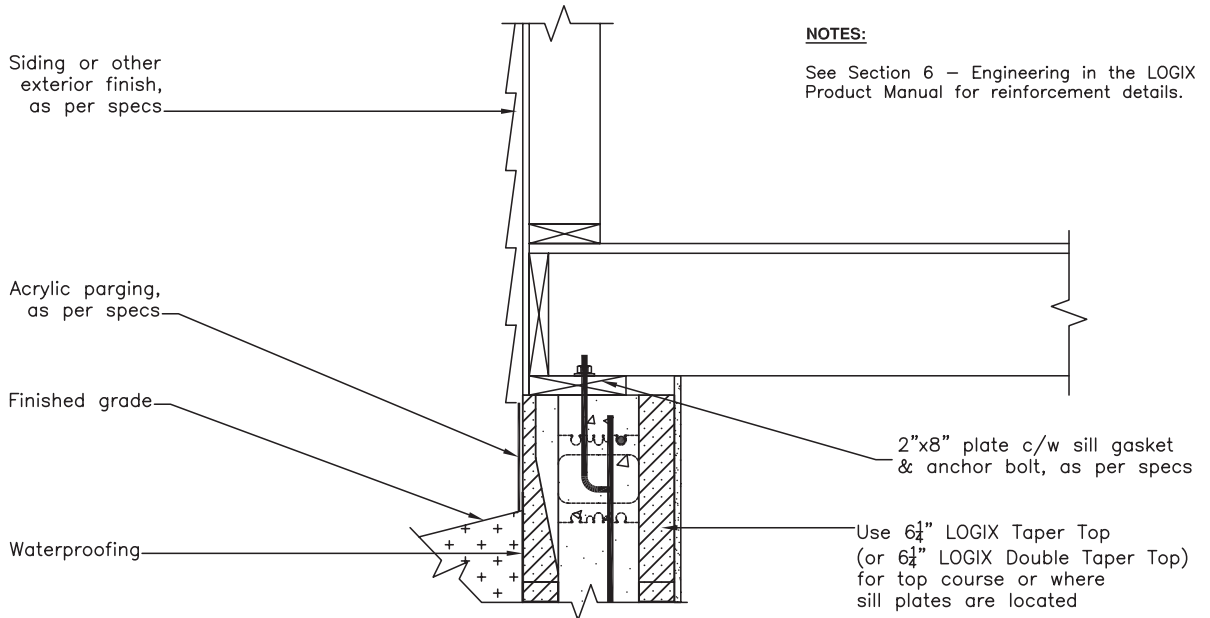
2x8 TOP PLATE OVERHUNG

RESIDENTIAL DRAWINGS 5.7.3 – 2x8 TOP PLATE OVERHUNG

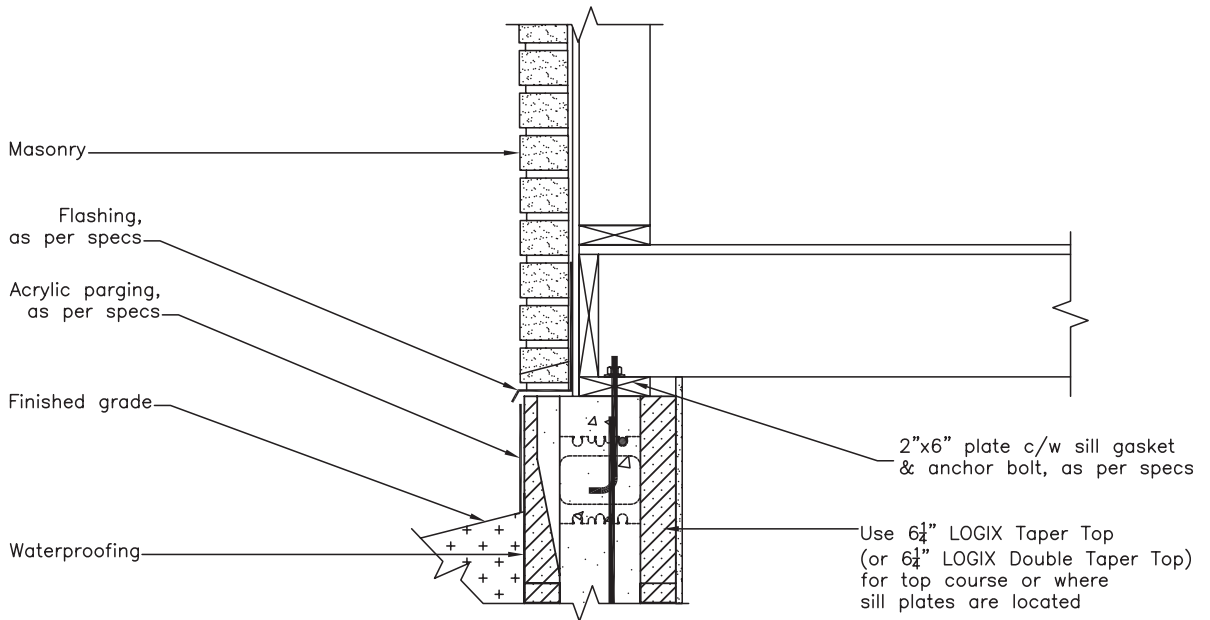
WITH TAPER TOP

5.7.4 – MASONRY VENEER WITH TAPER TOP

All drawings are downloadable at www.logixcf.com



2x8 TOP PLATE OVERHUNG WITH TAPERED TOP FORM



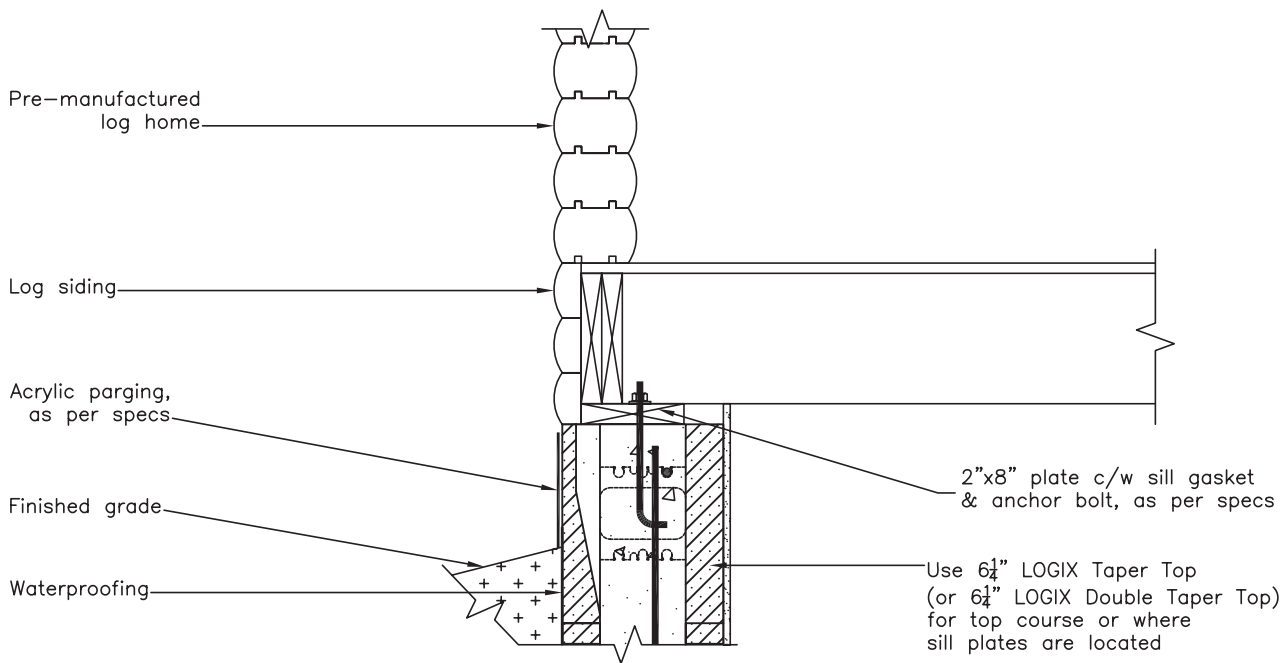
2x6 TOP PLATE OVERHUNG WITH MASONRY AND TAPERED TOP FORM

CAD DRAWINGS

RESIDENTIAL DRAWINGS 5.7.5 – TAPER TOP WITH LOG HOME

All drawings are downloadable at www.logixcf.com

CAD DRAWINGS



LOG HOME ON 2x8 SILL PLATE & TAPER TOP FORM

NOTES:

See Section 6 – Engineering in the LOGIX Product Manual for reinforcement details.

Good. Solid. Green.™

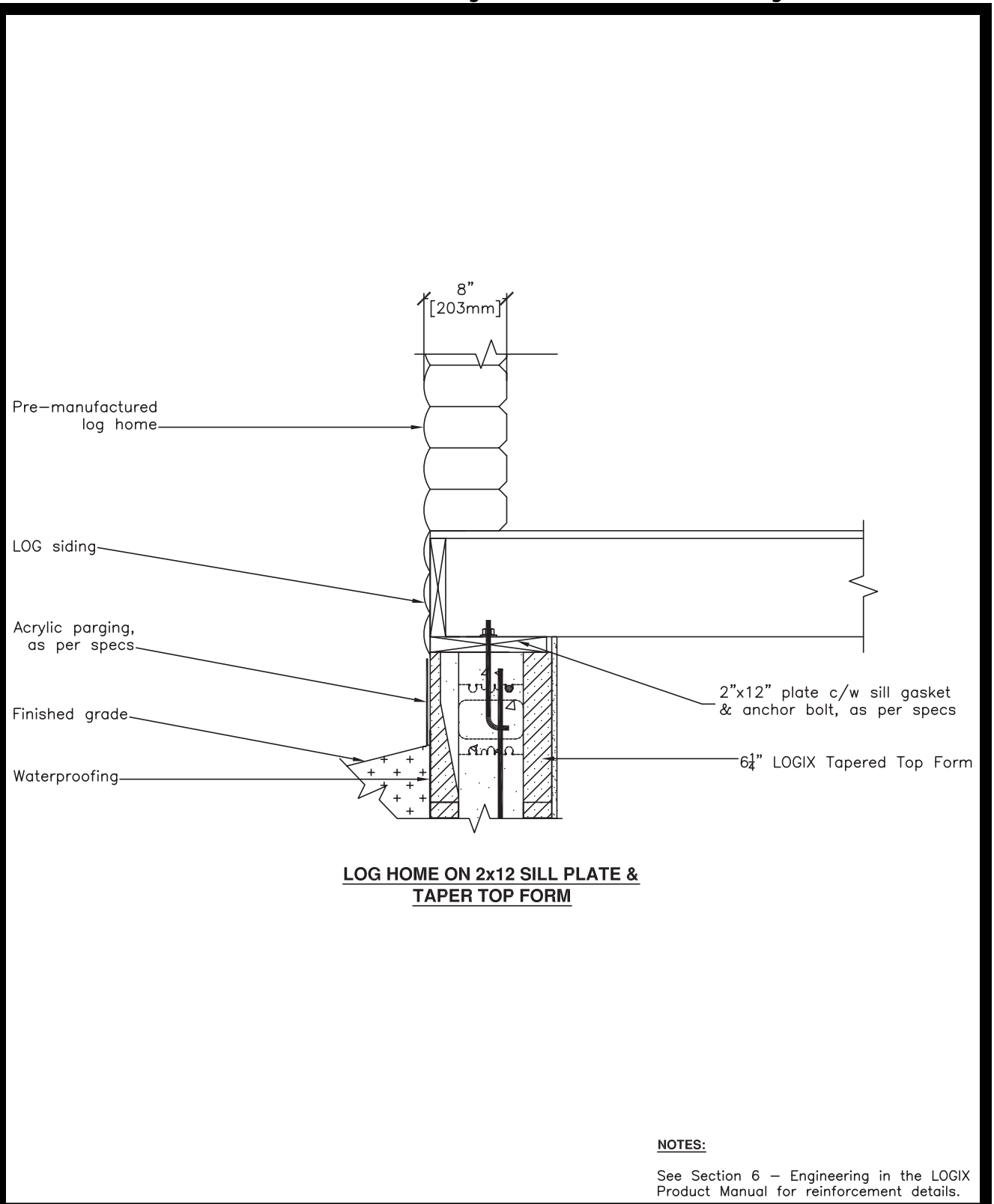
www.logixcf.com

5 – 7 6



RESIDENTIAL DRAWINGS 5.7.6 – TAPER TOP WITH LOG HOME 2x12 SILL PLATE

All drawings are downloadable at www.logixcf.com

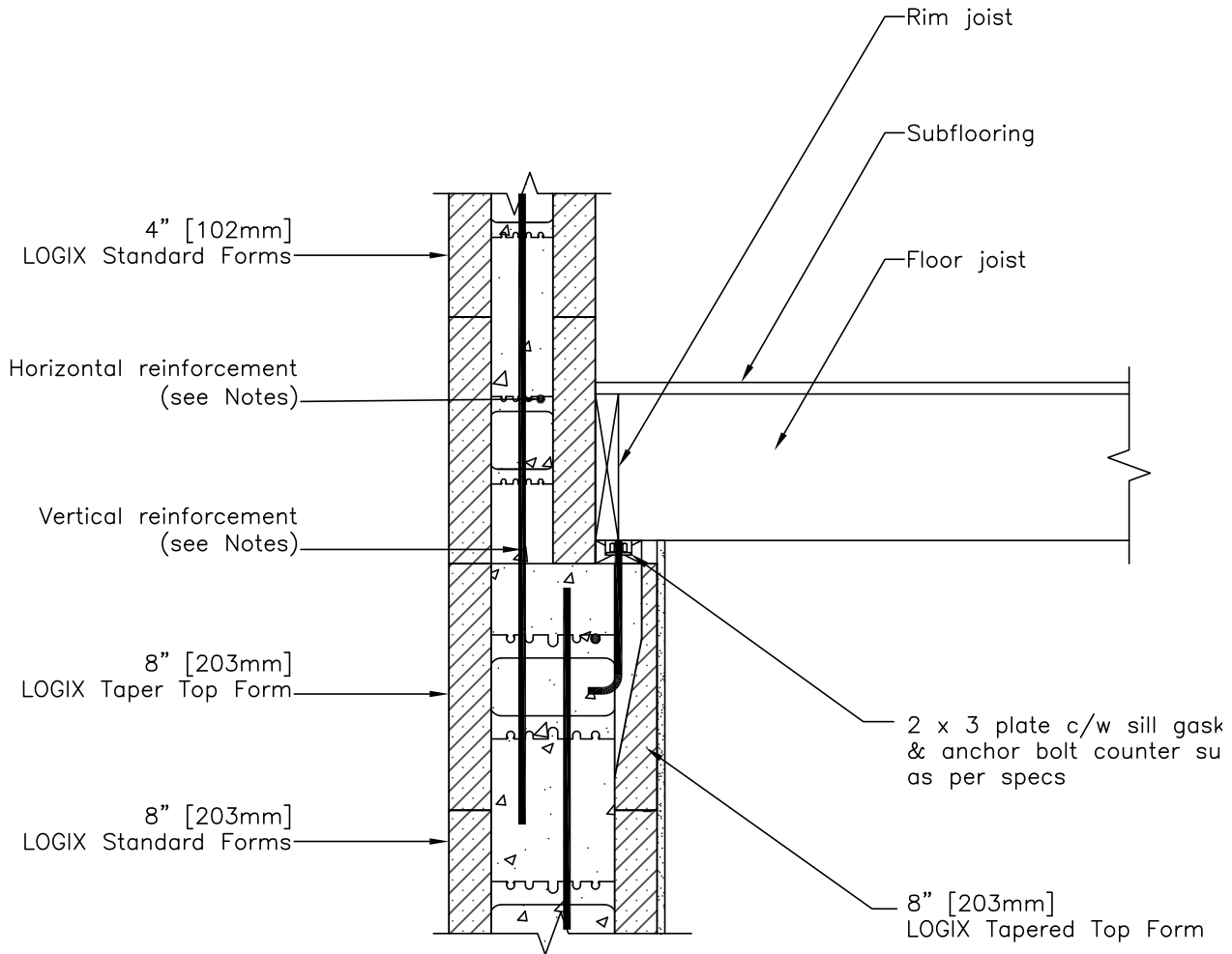


CAD DRAWINGS

RESIDENTIAL DRAWINGS **5.7.7 – TRANSITION - 8" TAPER TOP TO 4" STANDARD**

All drawings are downloadable at www.logixcf.com

CAD DRAWINGS



NOTES:

See Section 6 – Engineering in the LOGIX Design Manual or the LOGIX Field Manual for reinforcement deta

www.logixcf.com

Good. Solid. Green.™

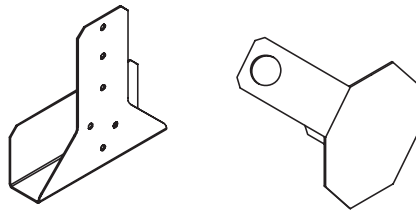
5 - 7 8



Rev. Sep 23/09

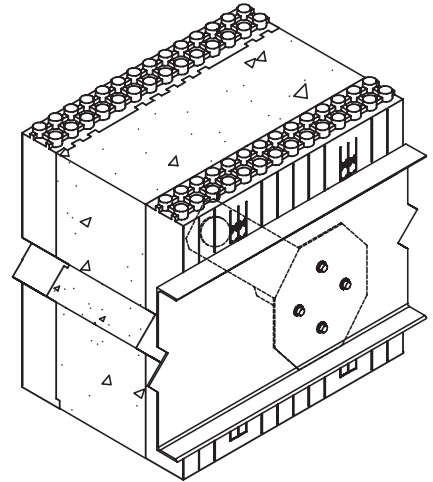
RESIDENTIAL DRAWINGS 5.7.8 – SIMPSON ICF HANGER

All drawings are downloadable at www.logixicf.com

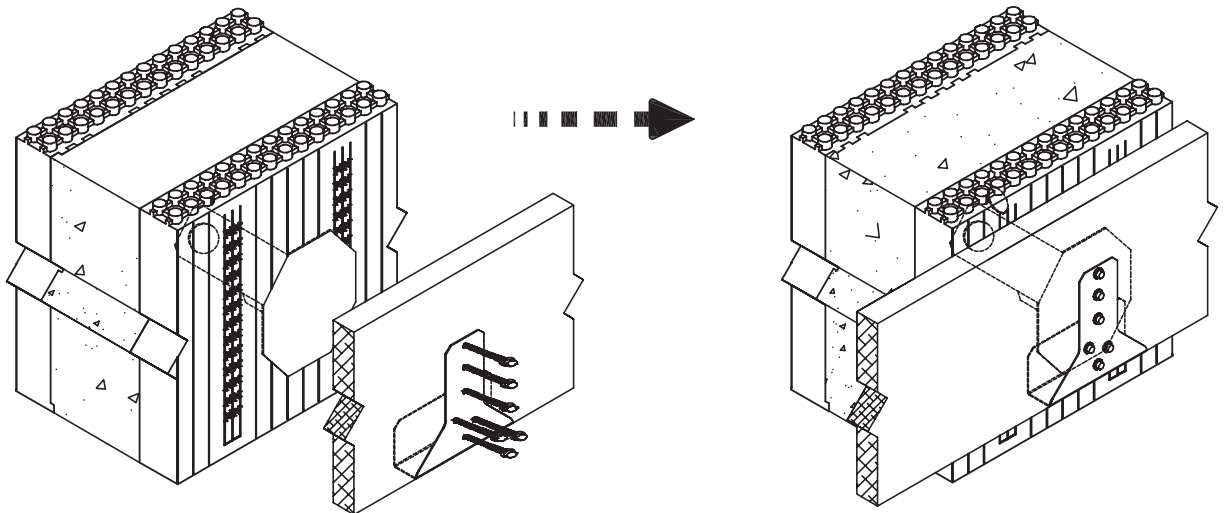


ICFLC-W & ICFLC-CW

ICFVL



STEEL LEDGER INSTALLATION



WOOD LEDGER INSTALLATION

NOTES:

1. For more information see Section 2 of the LOGIX Product Manual or visit www.strongtie.com.
2. Use extra caution when installing Simpson ICF Ledger Connection systems on both sides of a wall. Consult your local Simpson Strongtie rep or call Simpson Strongtie at (800) 999-5099 prior to installation.

CAD DRAWINGS

www.logixicf.com

Good. Solid. Green.™

5-79



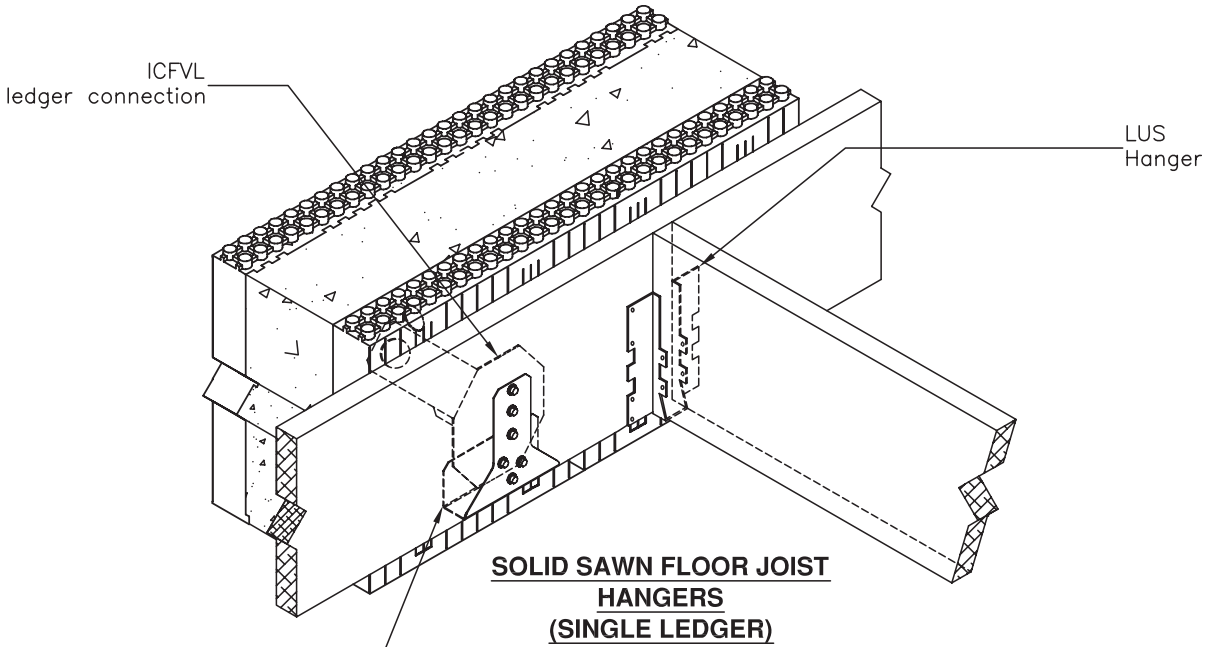
REPRINTED 2011

Rev. Sep 23/09

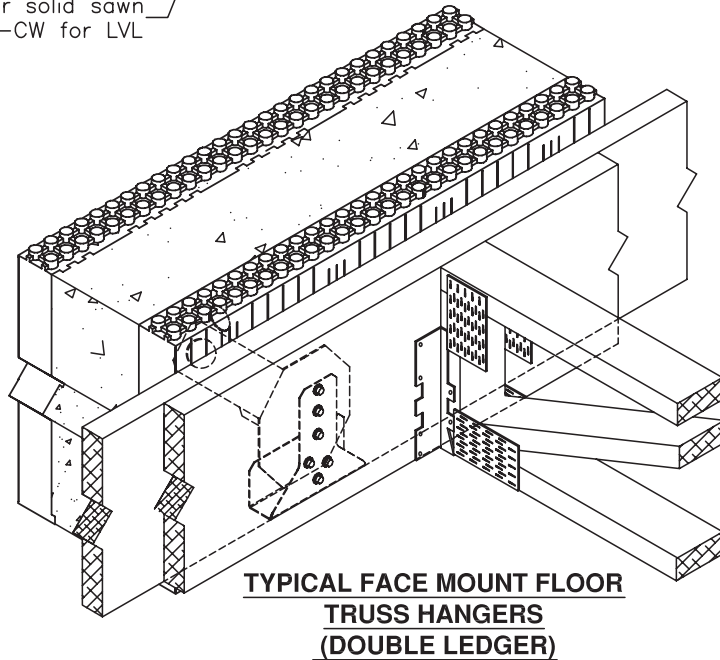
5.7.9 – SIMPSON STRONG TIE - ICF LEDGER CONNECTION SYSTEM

All drawings are downloadable at www.logixicf.com

CAD DRAWINGS



ICFVL-W for solid sawn
lumber or ICFVL-CW for LVL



NOTES:

1. For more information see Section 2 of the LOGIX Product Manual or visit www.strongtie.com.
2. Use extra caution when installing Simpson ICF Ledger Connection systems on both sides of a wall. Consult your local Simpson Strongtie rep or call Simpson Strongtie at (800) 999-5099 prior to installation.
3. Attachment of second ledger to be designed by others.

www.logixicf.com

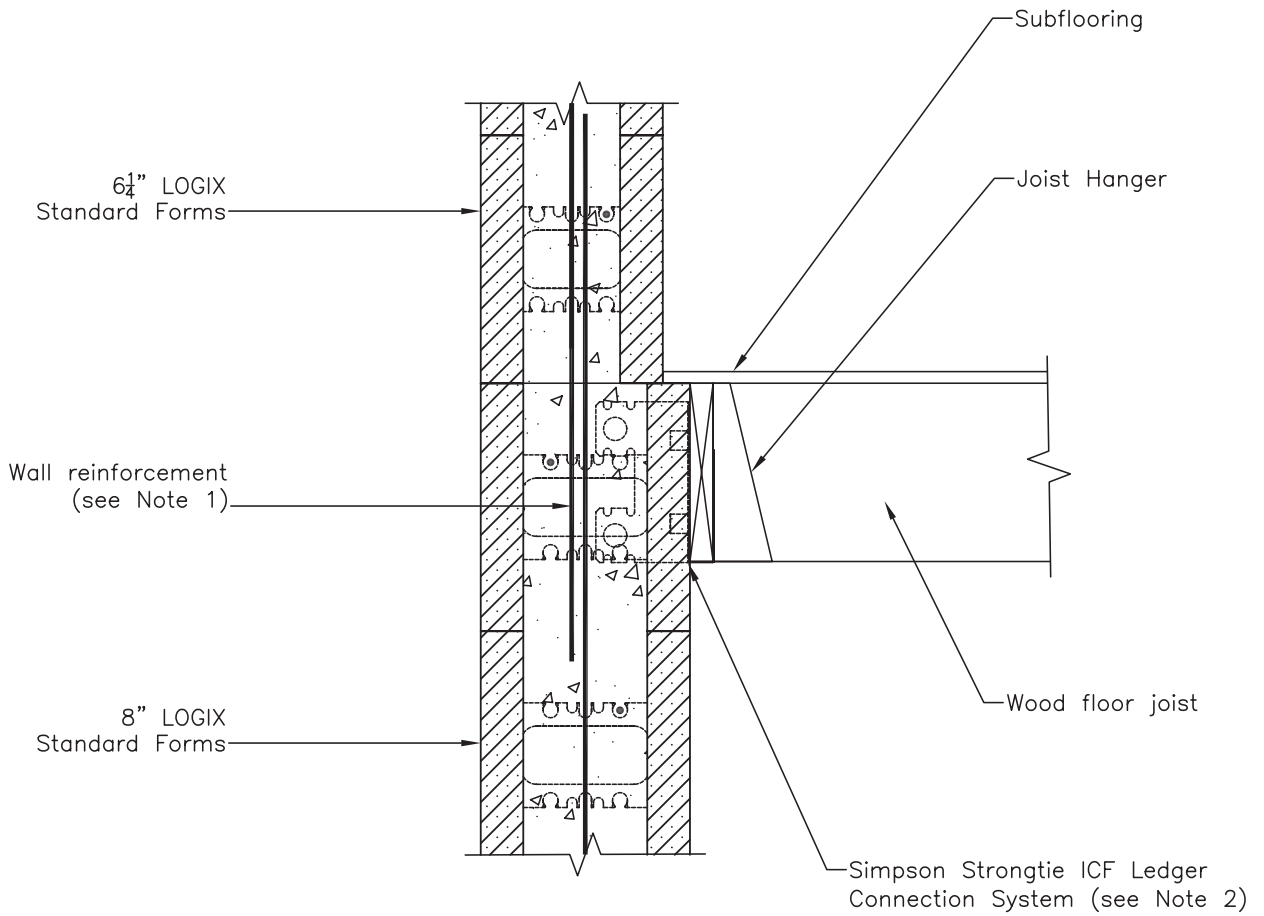
Good. Solid. Green.™

5 - 80



RESIDENTIAL DRAWINGS **5.7.10 – 8" TO 6" TRANSITION WITH SIMPSON ICF HANGERS**

All drawings are downloadable at www.logixicf.com



NOTES:

1. See Section 6 – Engineering in the LOGIX Product Manual for reinforcement details.
2. For spacing of Simpson Strongtie ICF Ledger Connection Systems refer to Section 2.12.4 of the LOGIX Product Manual.

CAD DRAWINGS

www.logixicf.com

Good. Solid. Green.™

5-81

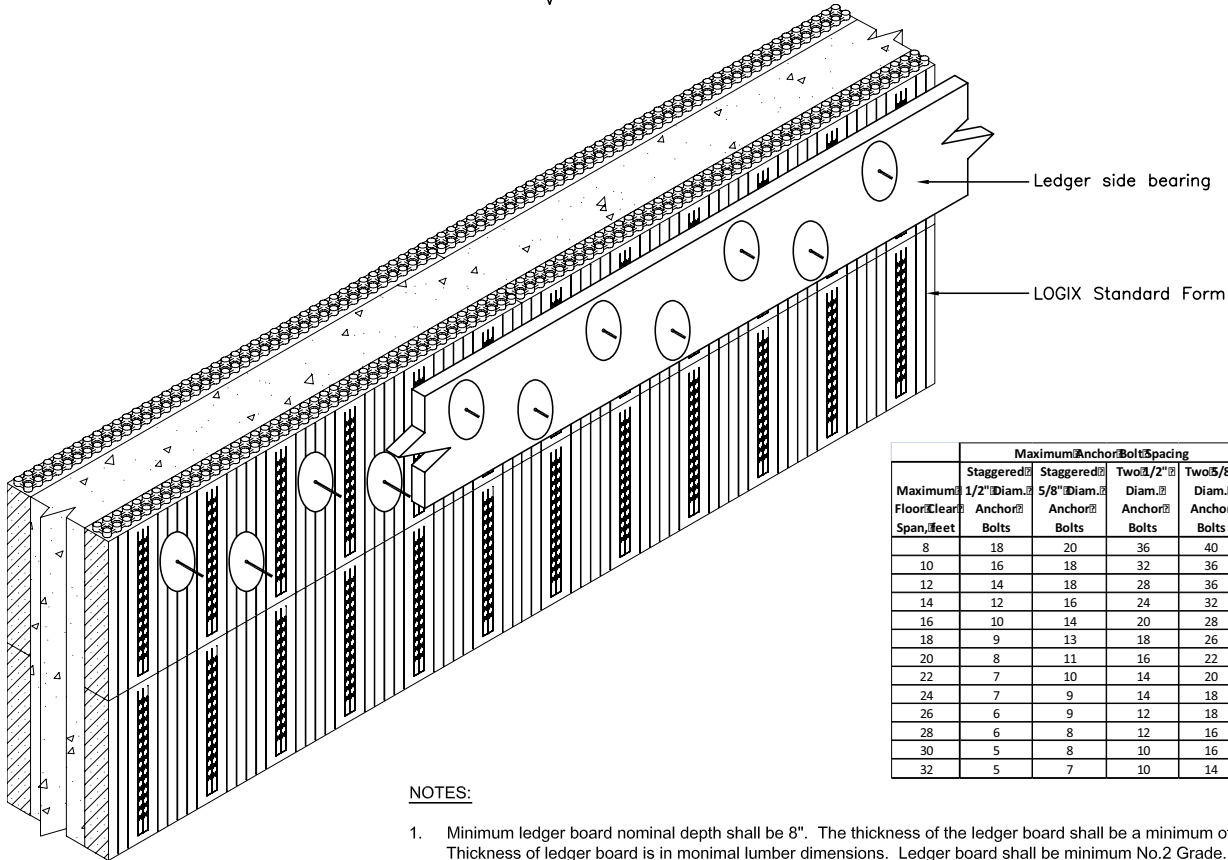
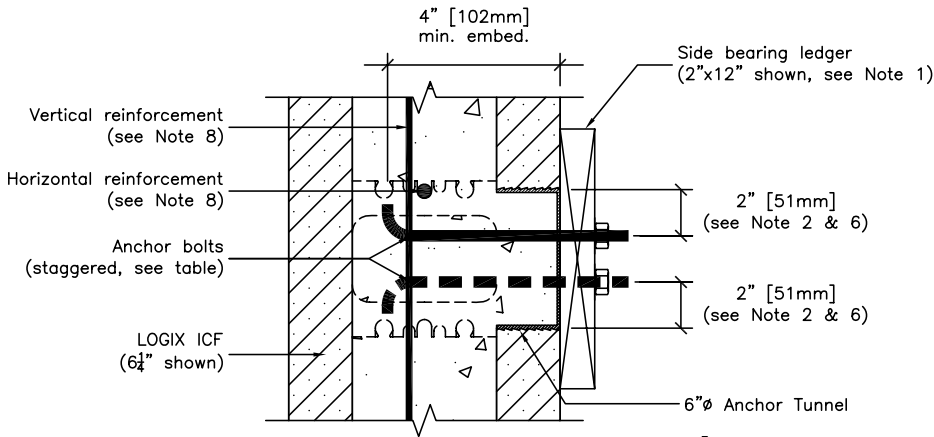
LOGIX®
INSULATED CONCRETE FORMS

REPRINTED 2011

Rev. Sep 23/09

RESIDENTIAL DRAWINGS 5.7.11 – ANCHOR TUNNEL - FLOOR LEDGER CONNECTION

All drawings are downloadable at www.logixcf.com



Maximum Floor Clear Span, feet	Maximum Anchor Bolt Spacing			
	Staggered 1/2" Diam. Anchor Bolts	Staggered 5/8" Diam. Anchor Bolts	Two 1/2" Diam. Anchor Bolts	Two 5/8" Diam. Anchor Bolts
8	18	20	36	40
10	16	18	32	36
12	14	18	28	36
14	12	16	24	32
16	10	14	20	28
18	9	13	18	26
20	8	11	16	22
22	7	10	14	20
24	7	9	14	18
26	6	9	12	18
28	6	8	12	16
30	5	8	10	16
32	5	7	10	14

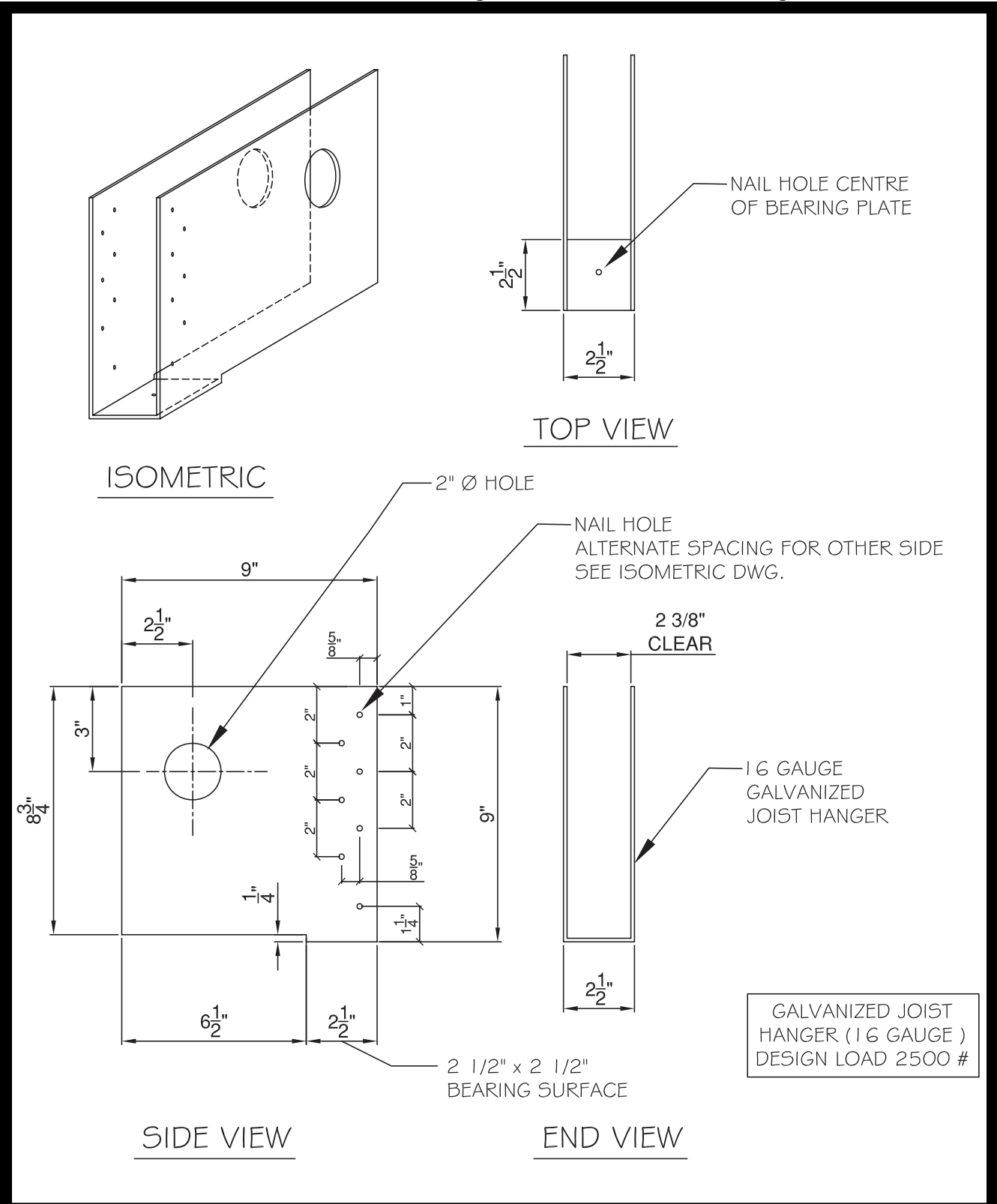
NOTES:

1. Minimum ledger board nominal depth shall be 8". The thickness of the ledger board shall be a minimum of 2". Thickness of ledger board is in minimal lumber dimensions. Ledger board shall be minimum No.2 Grade.
2. Minimum edge distance shall be 2" for 1/2" Ø anchor bolts and 2 1/2" for 5/8" Ø anchor bolts.
3. Interpolation is permitted between floor spans.
4. Floor span corresponds to the clear span of the floor structure spanning between load bearing walls or beams.
5. Anchor bolts shall extend through the ledger to the center of the horizontal or vertical core thickness of the waffle-grid concrete cross section.
6. Minimum vertical distance between bolts shall be 1 1/2" for 1/2" Ø anchor bolts, and 2" for 5/8" Ø anchor bolts.
7. In order to use this table, the wall must be within the vertical reinforcement parameters. Consult an engineer beyond the parameters. This table is only valid for a service dead load of 15psf and a service live load of 40psf.
8. See Section 6 - Engineering in the LOGIX Product Manual for reinforcing details.

CAD DRAWINGS

RESIDENTIAL DRAWINGS 5.7.12 – McMILLAN JOIST HANGER

All drawings are downloadable at www.logixcf.com



CAD DRAWINGS

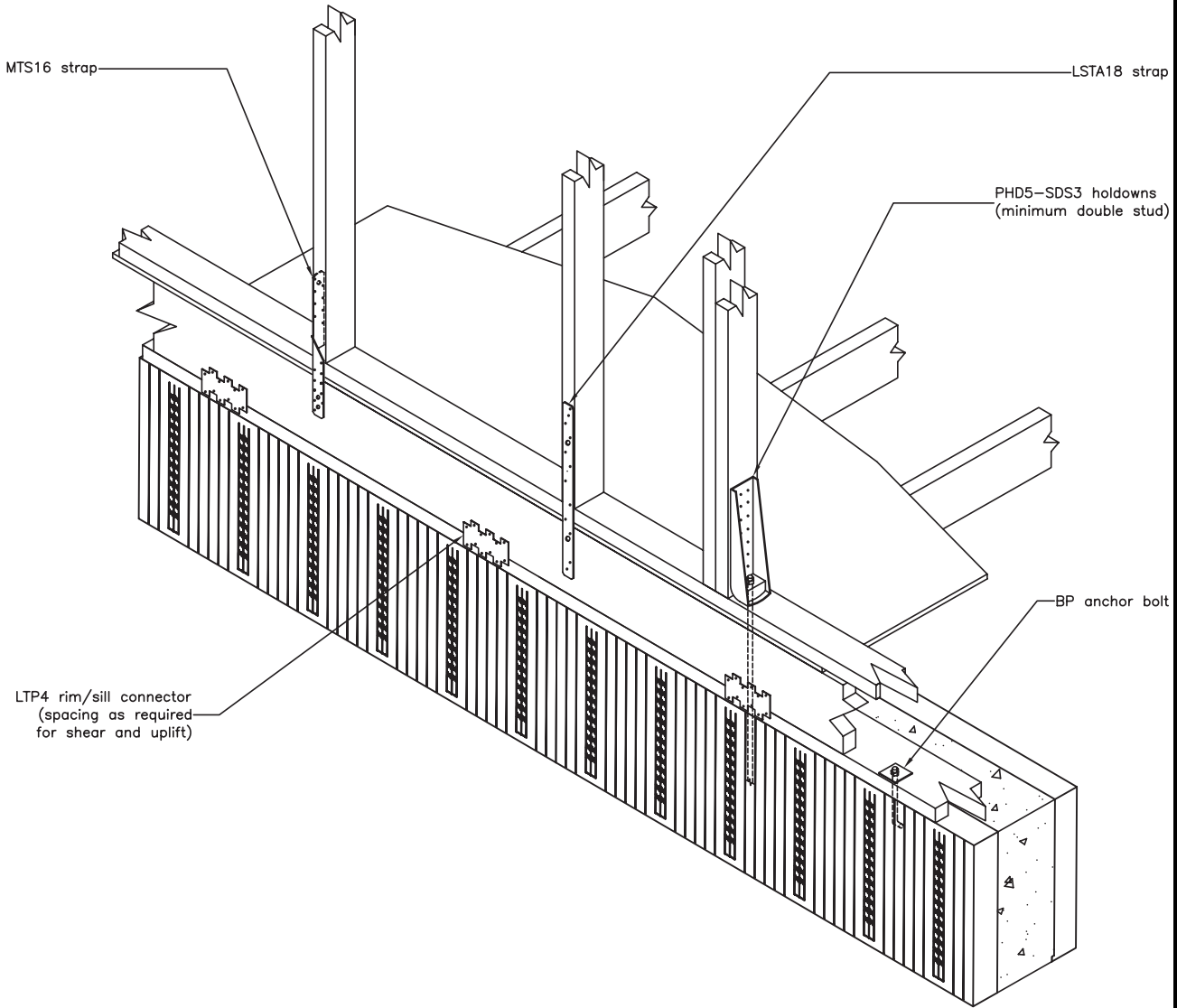
<p>Good. Solid. Green.™</p>	<p>www.logixcf.com</p> <p>5 – 8 3</p>	
-----------------------------	--	--

REPRINTED 2011

RESIDENTIAL DRAWINGS 5.7.13 – SIMPSON STRONG TIE- STUD FRAME CONNECTIONS

All drawings are downloadable at www.logixcf.com

CAD DRAWINGS



NOTES:

1. For more information visit www.strongtie.com.

www.logixcf.com

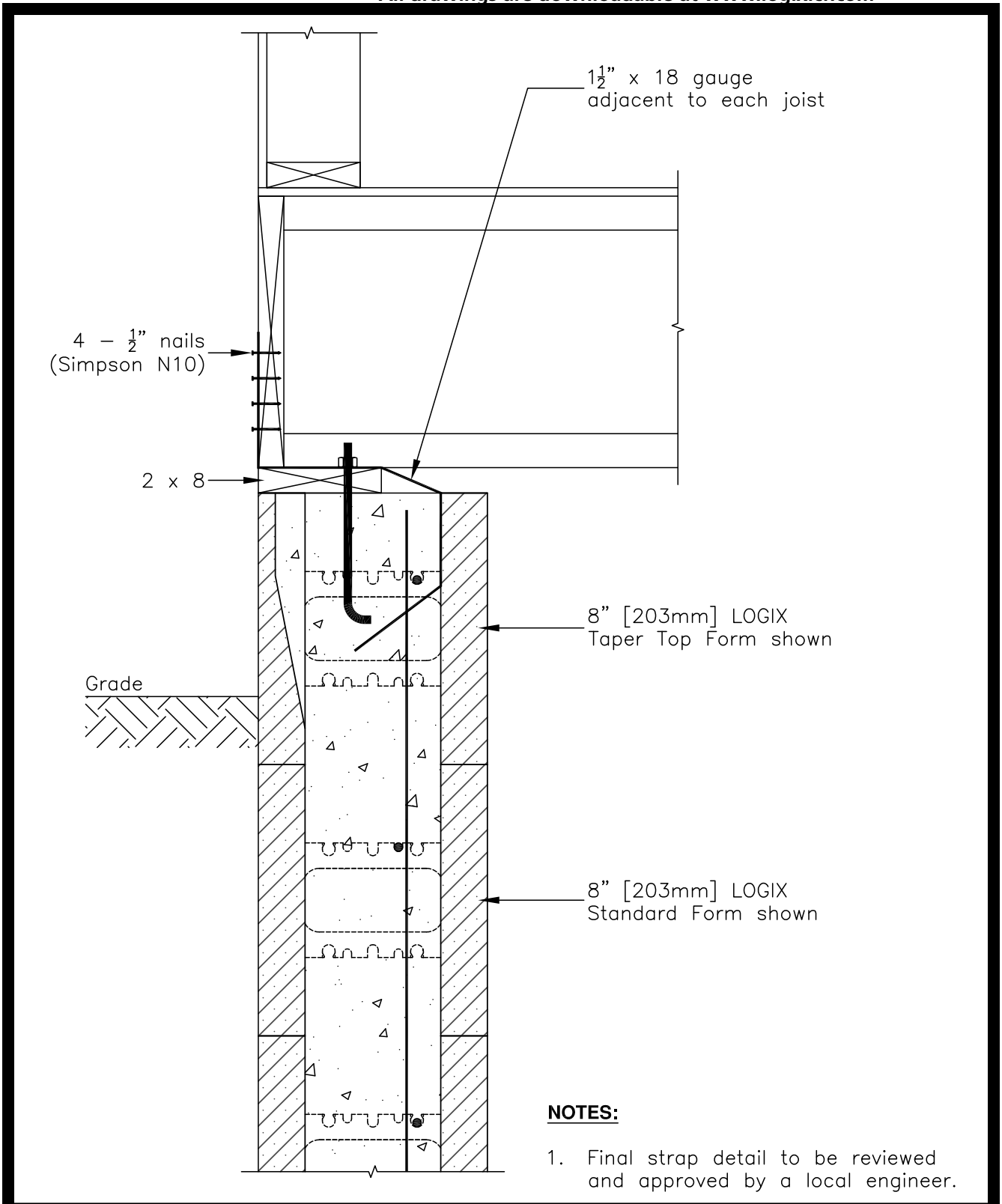
Good. Solid. Green.TM

5 - 84



RESIDENTIAL DRAWINGS 5.7.14 – FRAME STRAP ALTERNATIVE

All drawings are downloadable at www.logixcf.com

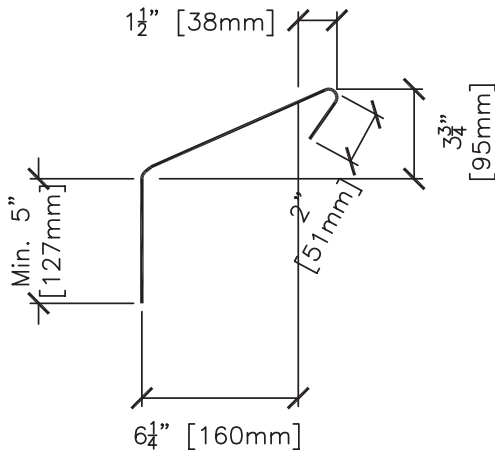
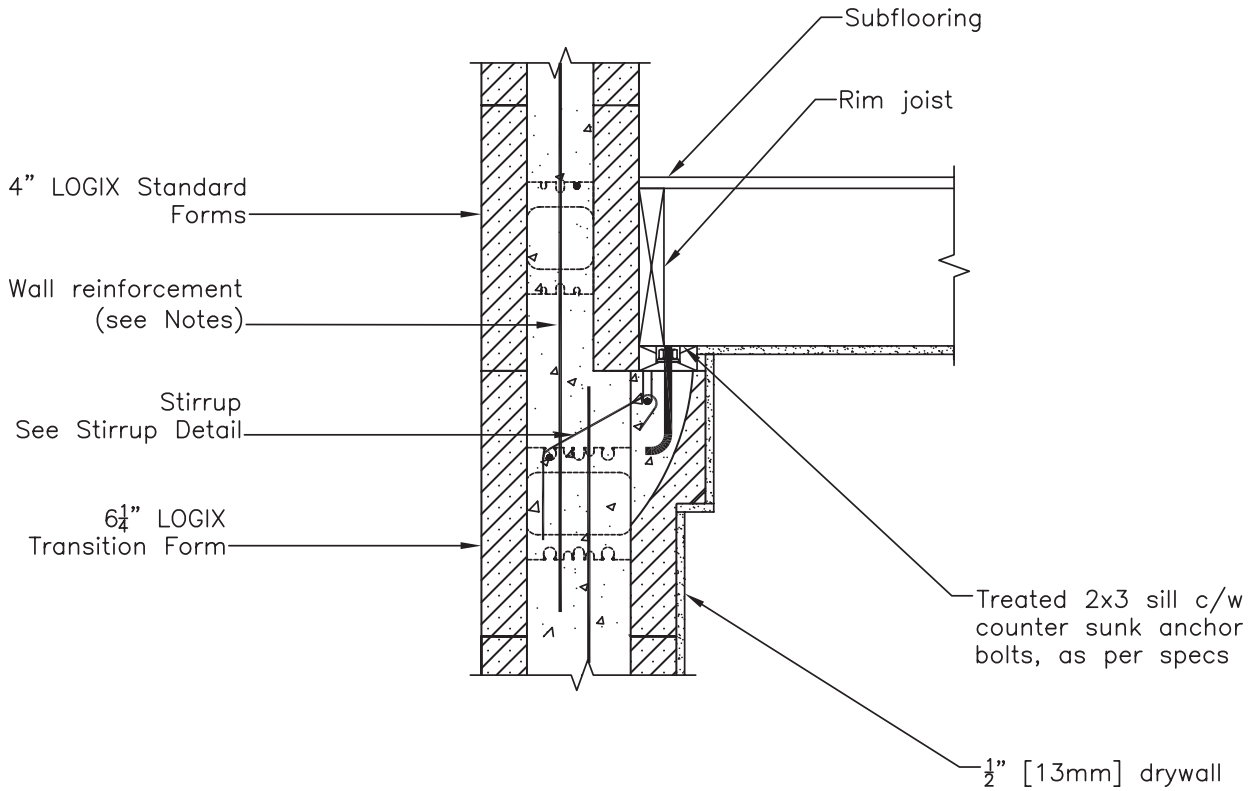


CAD DRAWINGS

RESIDENTIAL DRAWINGS 5.7.15 – 6.25" TRANSITION FORM SUPPORTING WOOD FLOOR JOIST

All drawings are downloadable at www.logixcf.com

CAD DRAWINGS



STIRRUP DETAIL

NOTES:

See Section 6 – Engineering in the LOGIX Product Manual for reinforcement details.

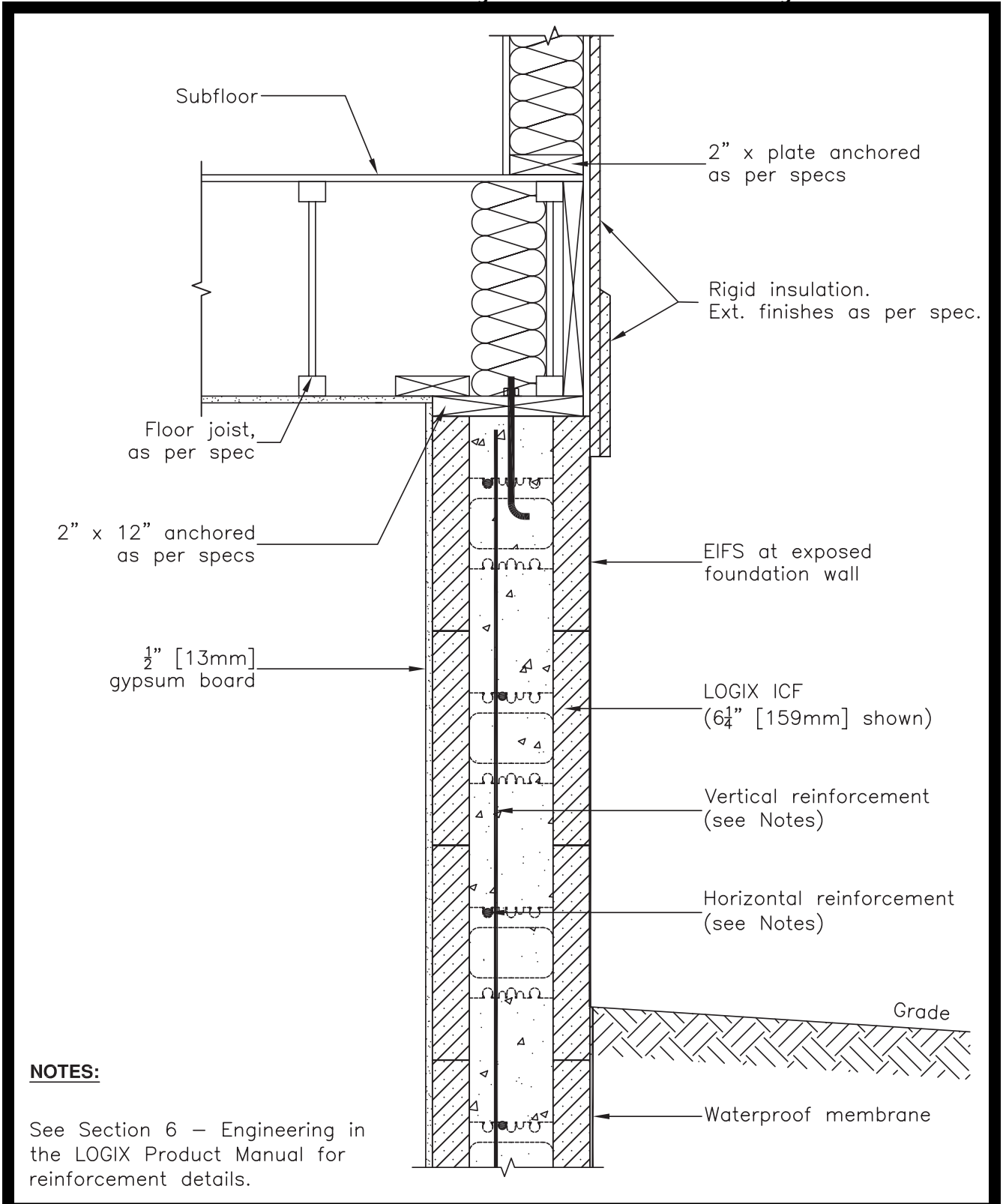
www.logixcf.com

Good. Solid. Green.™

5 – 86



All drawings are downloadable at www.logixicf.com

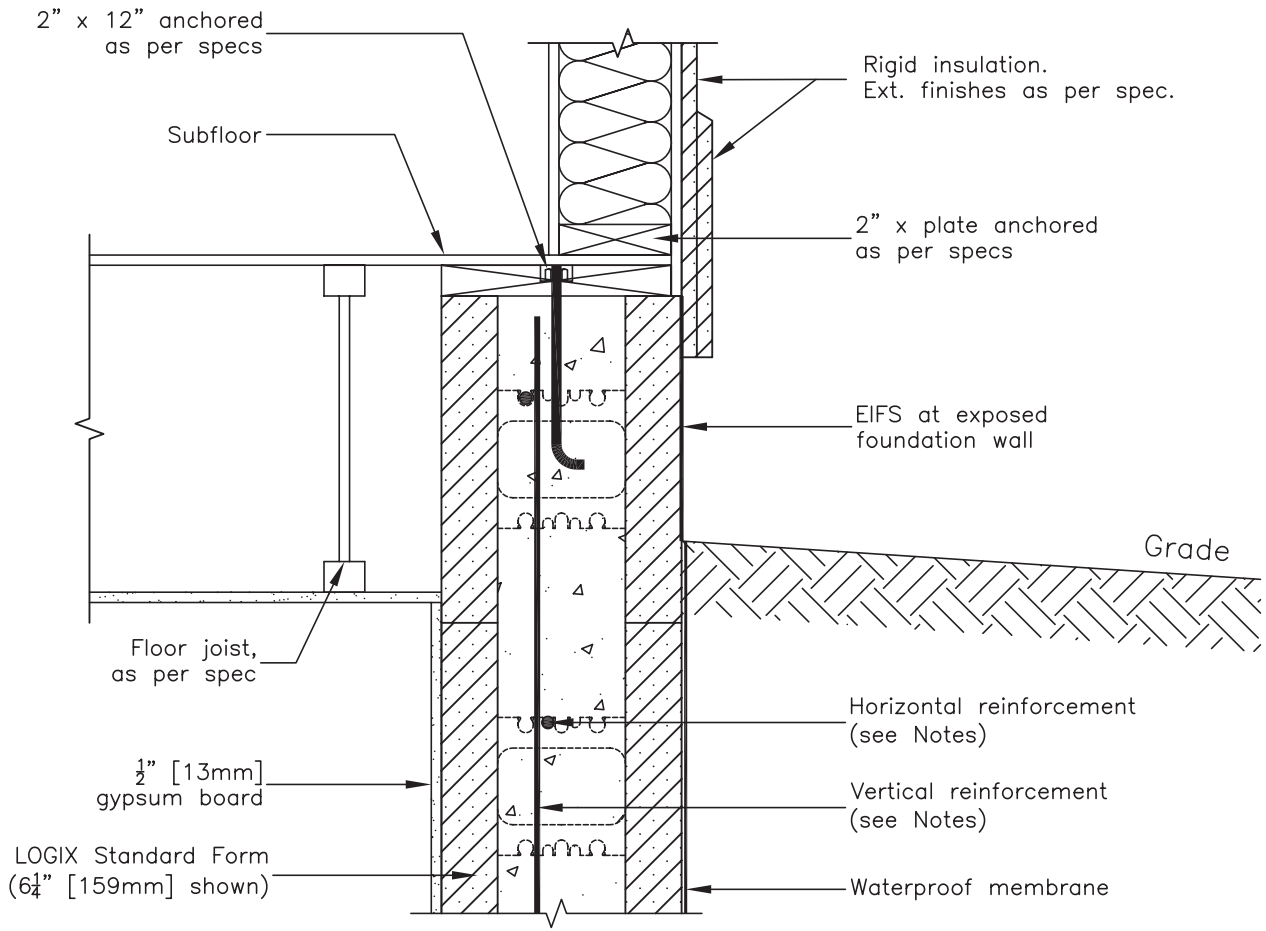


CAD DRAWINGS

RESIDENTIAL DRAWINGS 5.7.16 – WOOD FLOOR JOIST PARALLEL TO WALL (2 OF 2)

All drawings are downloadable at www.logixcf.com

CAD DRAWINGS

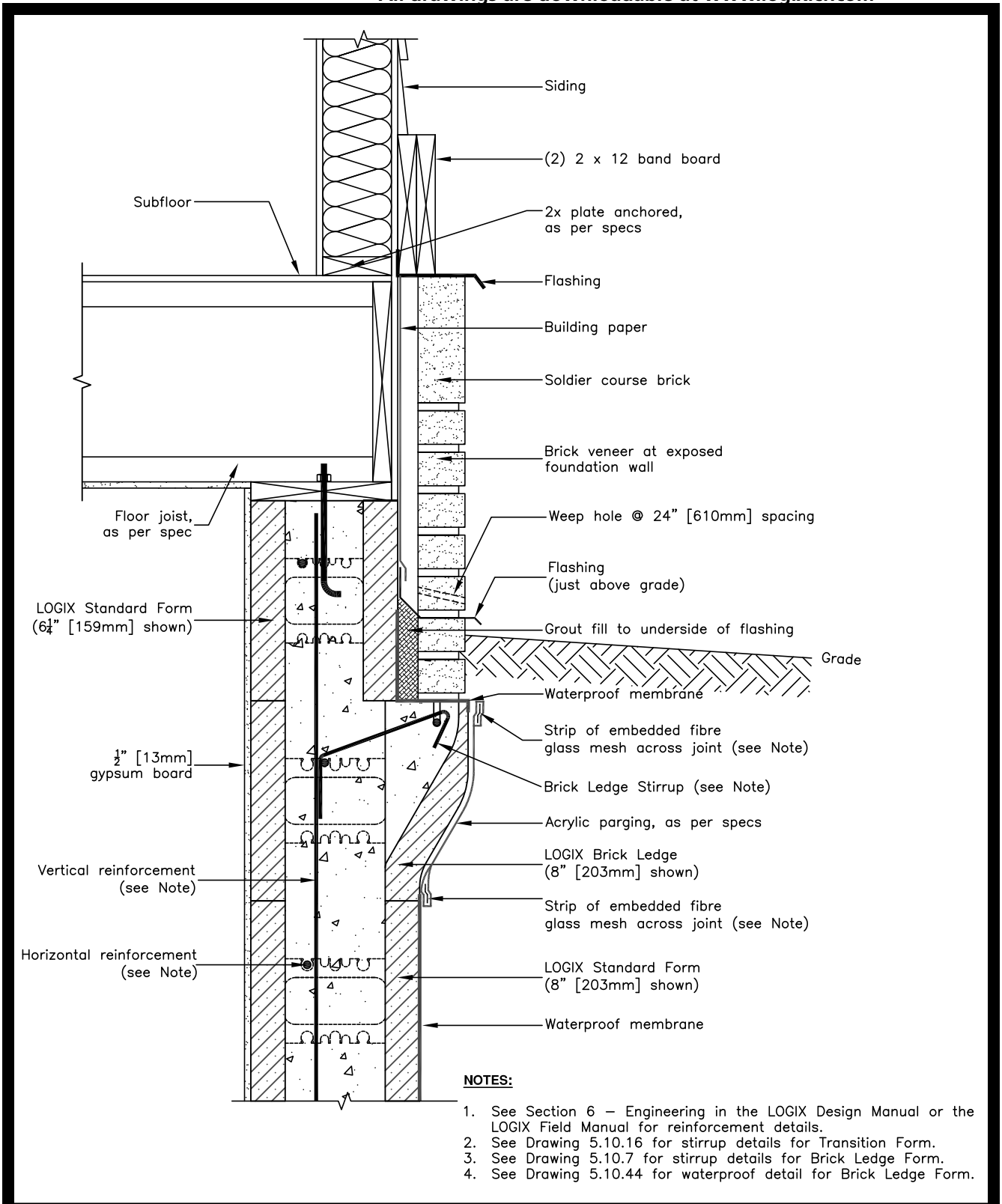


NOTES:

See Section 6 – Engineering in the LOGIX Product Manual for reinforcement details.

RESIDENTIAL DRAWINGS **5.7.17 – BELOW GRADE BRICK VENEER (1 OF 4)**

All drawings are downloadable at www.logixcf.com



- NOTES:**
1. See Section 6 – Engineering in the LOGIX Design Manual or the LOGIX Field Manual for reinforcement details.
 2. See Drawing 5.10.16 for stirrup details for Transition Form.
 3. See Drawing 5.10.7 for stirrup details for Brick Ledge Form.
 4. See Drawing 5.10.44 for waterproof detail for Brick Ledge Form.

CAD DRAWINGS

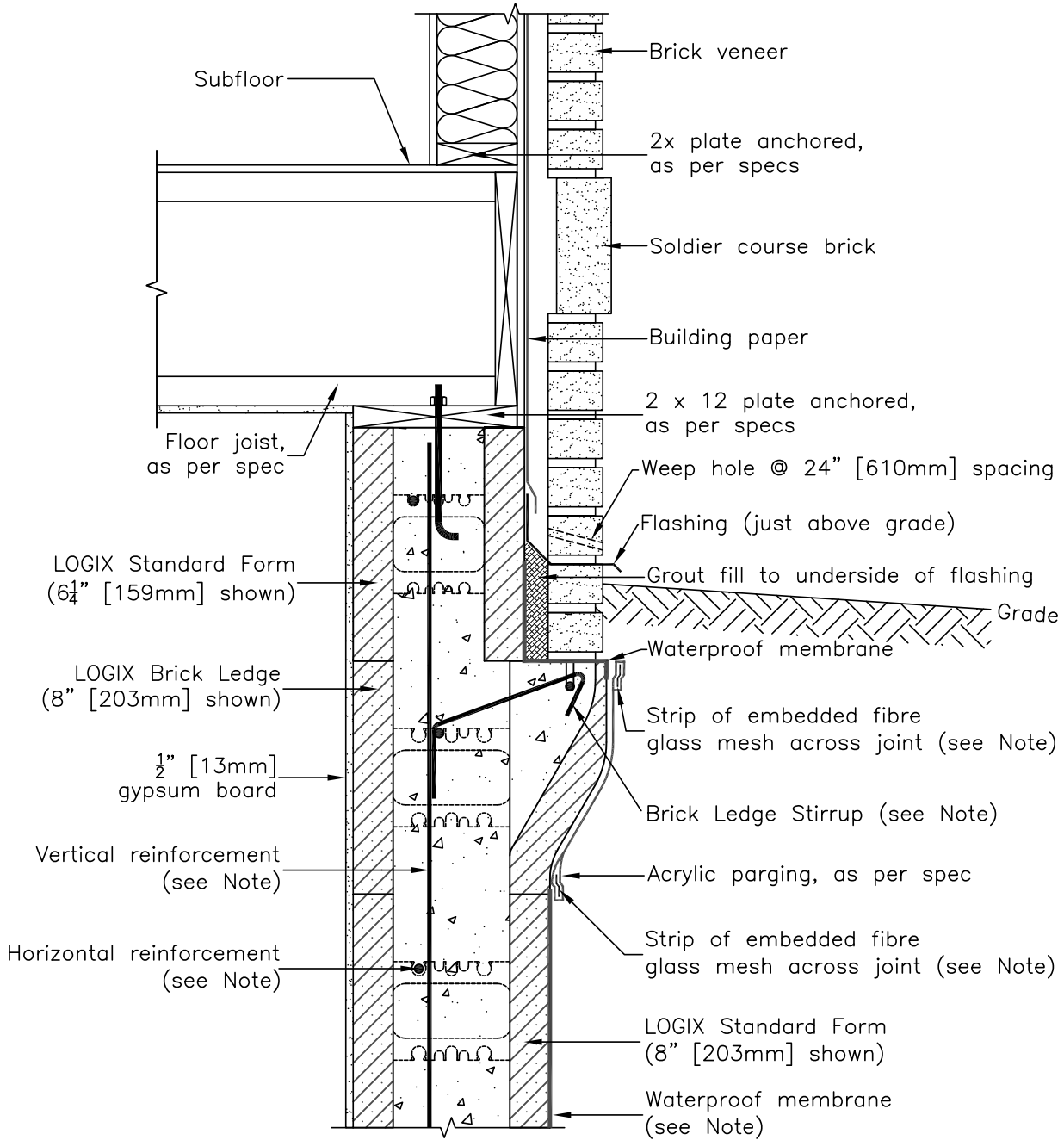
REPRINTED 2011

Rev. Sep 23/09

RESIDENTIAL DRAWINGS 5.7.17 – BELOW GRADE BRICK VENEER (2 OF 4)

All drawings are downloadable at www.logixcf.com

CAD DRAWINGS



NOTES:

1. See Section 6 – Engineering in the LOGIX Design Manual or the LOGIX Field Manual for reinforcement details.
2. See Drawing 5.10.7 for stirrup details for Brick Ledge Form.
3. See Drawing 5.10.44 for waterproof detail for Brick Ledge Form.

www.logixcf.com

Good. Solid. Green.™

5 - 90

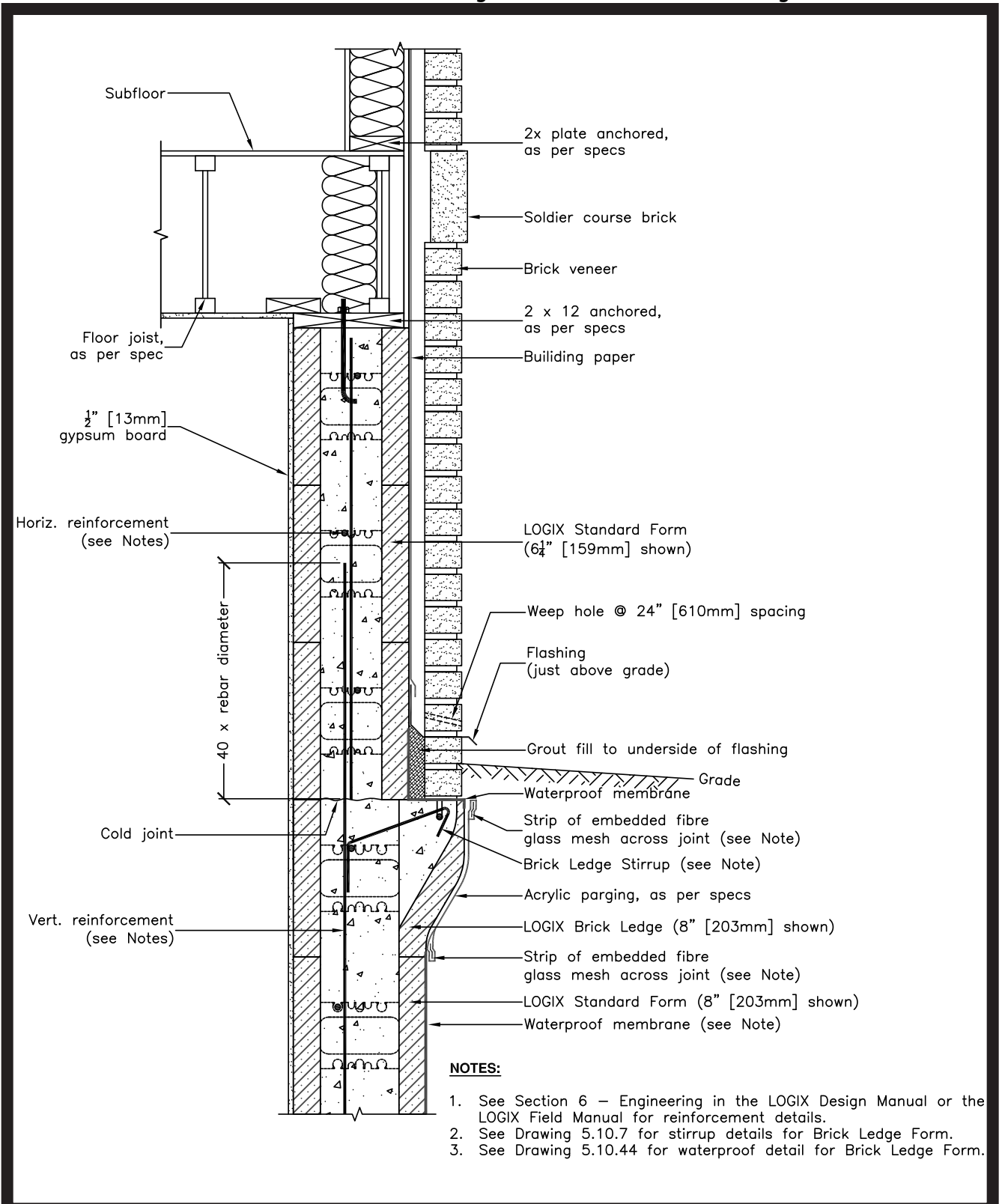


REPRINTED 2011

Rev. Sep 23/09

RESIDENTIAL DRAWINGS 5.7.17 – BELOW GRADE BRICK VENEER
(3 OF 4)

All drawings are downloadable at www.logixcf.com



CAD DRAWINGS

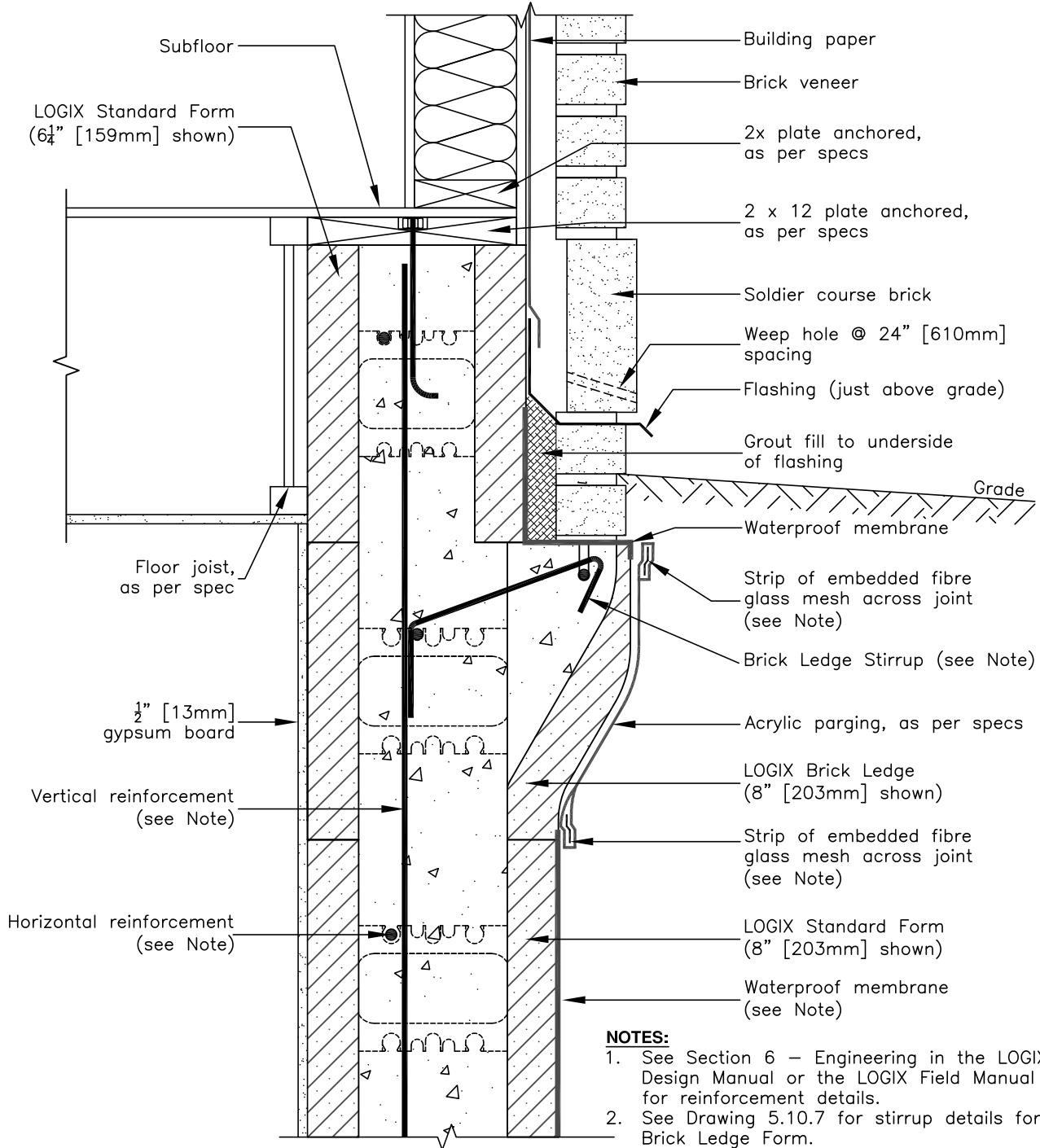
NOTES:

1. See Section 6 – Engineering in the LOGIX Design Manual or the LOGIX Field Manual for reinforcement details.
2. See Drawing 5.10.7 for stirrup details for Brick Ledge Form.
3. See Drawing 5.10.44 for waterproof detail for Brick Ledge Form.

5.7.17 – BELOW GRADE BRICK VENEER
(4 OF 4)

All drawings are downloadable at www.logixcf.com

CAD DRAWINGS



- NOTES:**
1. See Section 6 – Engineering in the LOGIX Design Manual or the LOGIX Field Manual for reinforcement details.
 2. See Drawing 5.10.7 for stirrup details for Brick Ledge Form.
 3. See Drawing 5.10.44 for waterproof detail for Brick Ledge Form.